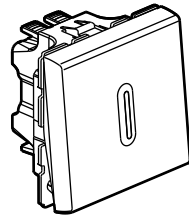
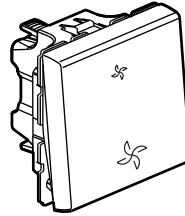


Mosaic™
Two-way switches 10 AX - antimicrobial*

Cat. No(s): 0 787 10/11/12
0 770 27



0 787 12



0 770 27

1. USE

Lighting mechanisms with or without marking elements (LED indicator) control.

Products are made of silver-ion based antimicrobial* material. This technology eliminates bacteria, fungi and viruses without creating any immunisation or resistance effects (physical, rather than chemical, destruction).

Particularly suitable for healthcare establishments (hospitals, clinics, nursing homes, laboratories, waiting rooms, etc.) and more generally for areas subject to hygiene restrictions (industrial, shared and restaurant kitchens, waste, etc.).

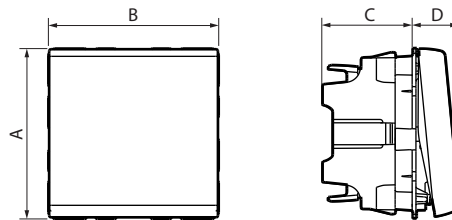
These products offer an additional way of ensuring the non-proliferation of bacteria, fungi and viruses without interfering with cleaning protocols. The mechanism can be flush-mounted or surface-mounted.

To be equipped with plates.

2. RANGE

	Description	Cat. No.
	Two-way switch - 1 module	0 787 10
	Two-way switch - 2 modules	0 787 11
	Two-way switch with LED indicator Equipped with a terminal for neutral connection To be equipped with an indicator 2 modules	0 787 12
	Two-way switch for direct control of controlled mechanical ventilation. 2 modules	0 770 27

3. OVERALL DIMENSIONS (mm)



References	A	B	C	D
0 787 10	45	22.5	24	12.3
0 787 11/12 - 0 770 27	45	45	24	12.3

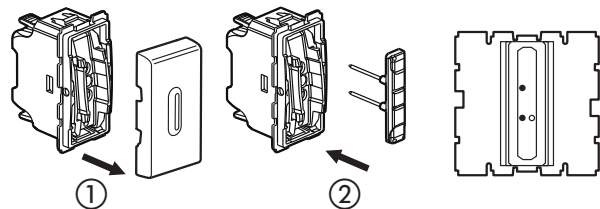
4. CONNECTION

Type of terminals: automatic
 Terminal capacity: 2 x 2.5 mm²
 Stripping length: 13 mm

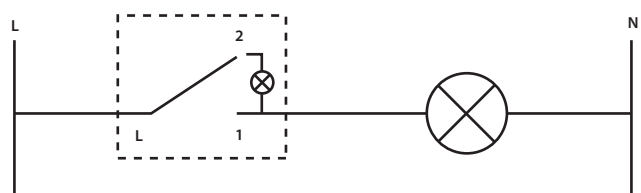
5. WIRING

Reference: 0 787 12

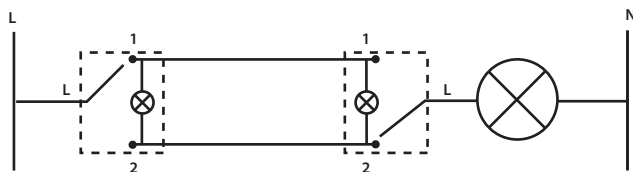
Illuminated function: Illuminates the switch in the dark.



- 1 - Unclip the rocker
- 2 - Insert the indicator light Cat. No. 0 676 86 or Cat. No. 0 676 87

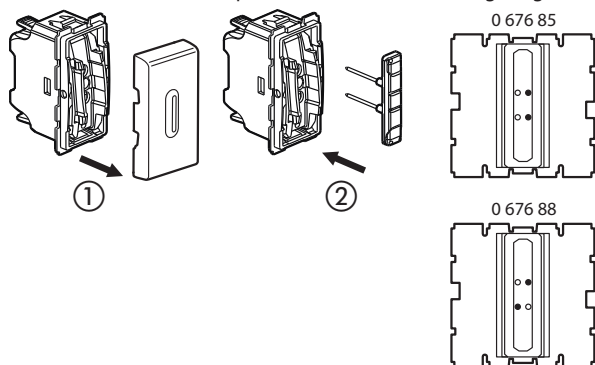


5. WIRING (continued)

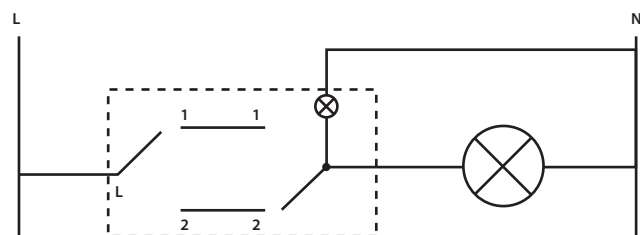


Two-way switch with an indicator

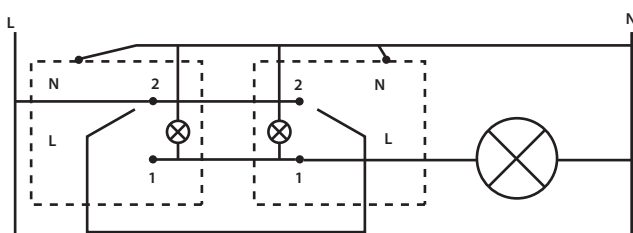
Indicator function: The lamp is switched on when the lighting is on.



- 1 - Unclip the rocker
- 2 - Insert the indicator light Cat. No. 0 676 88 or 0 676 85



Two-way switch existing cabling



Two-way switch

6. TECHNICAL CHARACTERISTICS

6.1 Mechanical characteristics

Impact tests: IK 04
Protection against solid bodies and liquids: IP 31 D
Nota : Switching mechanism (handling force 2.6 to 3.5 N).

6.2 Material characteristics

Cover plate: ABS Blanc RAL 9003 + antimicrobial* surface treatment
Cat. No. 0 787 12: PC + antimicrobial* surface treatment
Base: PC
Rocker: PC
Halogen free
UV resistant

Self-extinguishing:
+ 850°C / 30 s for insulating components holding in place live parts.
+ 650°C / 30 s for the other insulating components.

6.3 Electrical characteristics

Voltage: 250 VAC
Current: 10 AX

6.4 Climatic characteristics

Storage temperature: - 10° C to + 70° C
Operating temperature : - 5° C to + 5 0° C

7. CLEANING

Surface cleaning with a cloth.
Do not use: acetone, tar remover, trichloroethylene.

7.1 Resistance to cleaning agents

Resistance to the following agents: Hexane (EN 60669-1), methylated spirits, soapy water, diluted ammonia, pure bleach diluted 10%, glass cleaning substance, pre-impregnated wipe.

7.2 Resistance to hospital-type cleaning agents

Resistance to the following agents: Anios, Surfianios, Bactilyesine, Diluted hydrogen peroxide (35%).

Caution: A preliminary test should be carried out if other specific cleaning products are to be used.

8. ACCESSORIES

Lights for switches with indicator 0 787 12:

Illuminated	0 676 86 (230 V - 0,15 mA)
	0 676 87 (12-24-48 V)
Indicator	0 676 85 (230 V - 3 mA)
	0 676 88 distributed phase (230 V - 3 mA)

9. CONFORMITY AND APPROVALS

Compliance with standards of installation and manufacturing.
See e.catalogue.

* Contains a silver compound to ontagonize the growth of bacteria on the surface.